

FILE C:\Users\ltpic\Documents\HDR\10382926\_HNH\_&\_PSG\_Storm\_Recovery\_NTP\_15\Project\_Files\HDR\CAD\Production\092472005\TITLE.dwg LAYOUT A1

# STATE OF ALASKA

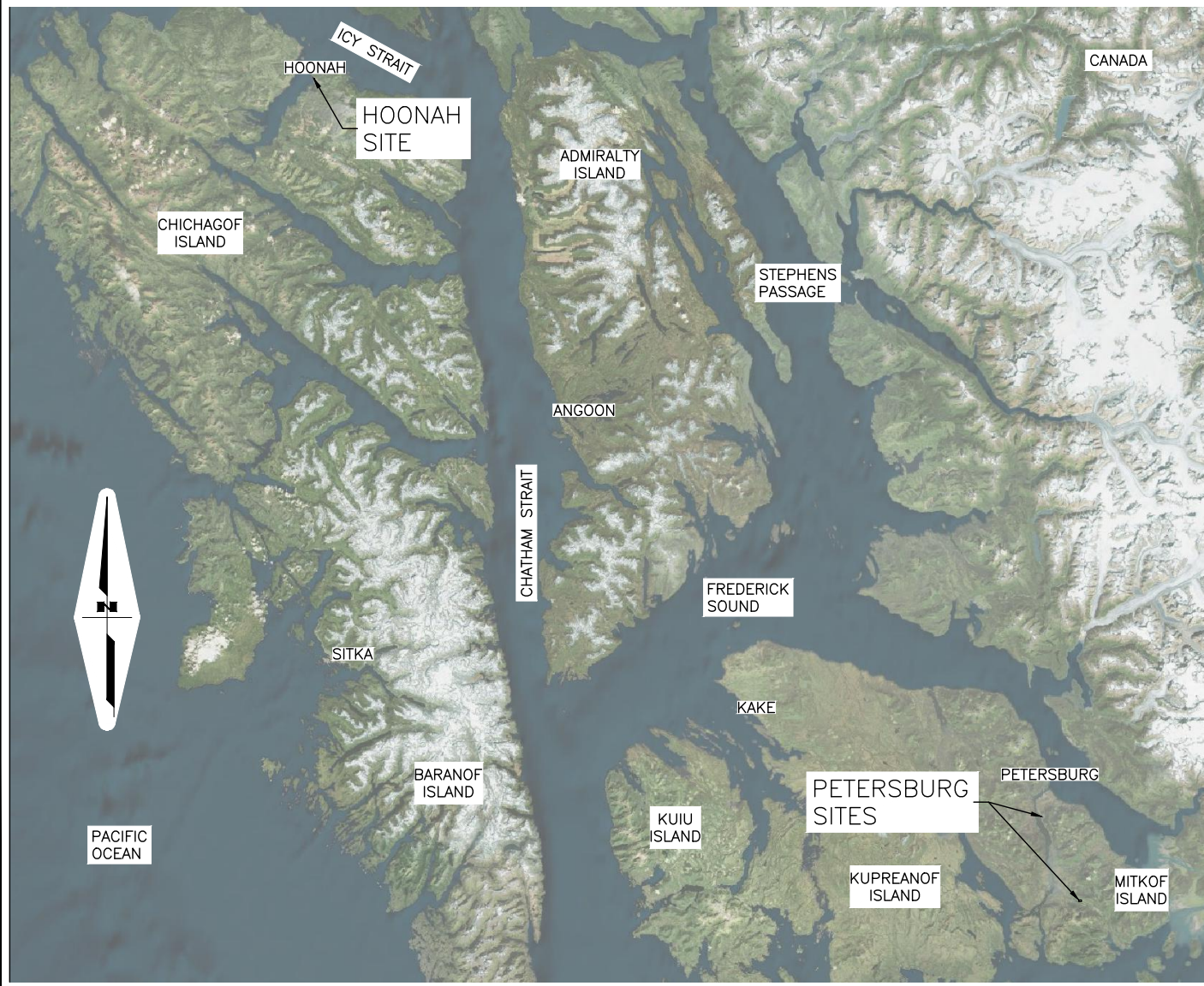
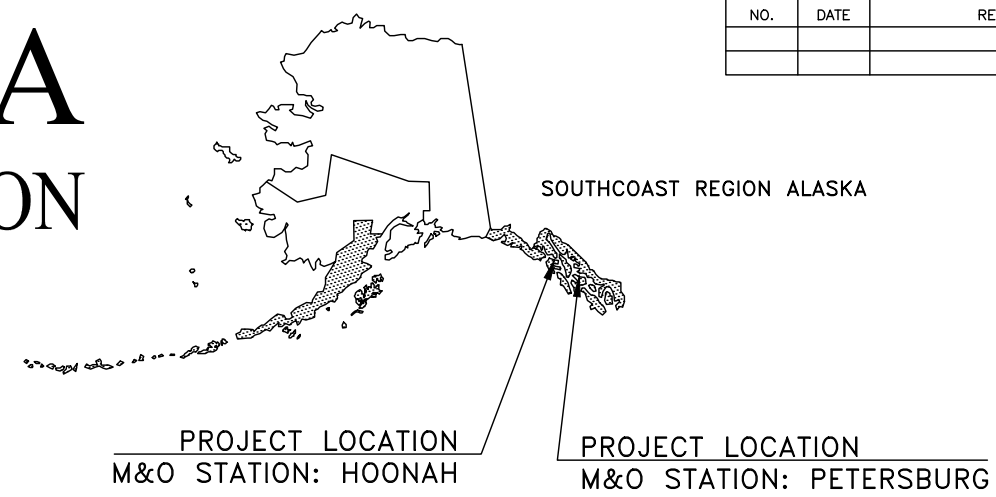
## DEPARTMENT OF TRANSPORTATION & PUBLIC FACILITIES

### PROPOSED HIGHWAY PROJECT

## PLANSET A: SGY, HNH, PSG ROADWAY AND CULVERTS - DEC 20 SE PR PROJECT NO. 0093008/SFHWHY00447

GRADING, DRAINAGE, RESURFACING, STRIPING, AND SIDE SLOPE STABILIZATION

NO.	DATE	REVISIONS	STATE	PROJECT DESIGNATION	YEAR	SHEET NO.	TOTAL SHEETS
			ALASKA	0093008/SFHWHY00447	2025	A1	31
DDIR HNH001			ROUTE ID: 4401009X000	MILEPOINT: 0.20			
			LATITUDE: 58.11532	LONGITUDE: -165.45269			
DDIR PSG002			ROUTE ID: 4281008X000	MILEPOINT: 15.46			
			LATITUDE: 56.61932	LONGITUDE: -132.83865			
DDIR PSG003			ROUTE ID: 4281008X000	MILEPOINT: 2.57			
			LATITUDE: 56.77469	LONGITUDE: -132.96382			



DESIGN DESIGNATIONS			
PROJECT LOCATION	FRONT STREET MP 0.20	MITKOF HIGHWAY MP 2.57	MITKOF HIGHWAY MP 15.46
DDIR	HNH001	PSG003	PSG002
PROJECT TYPE	RECONSTRUCTION	RECONSTRUCTION	RECONSTRUCTION
FUNCTIONAL CLASS	MAJOR COLLECTOR	MAJOR COLLECTOR	MAJOR COLLECTOR
ADT (2022)	1,480	2,340	180
DESIGN SPEED (V)	20	40	50
WIDTH (LF)	27	15	24
LENGTH (LF)	70	50	100

USE THESE PLANS IN CONJUNCTION WITH THE STATE OF ALASKA STANDARD SPECIFICATIONS FOR HIGHWAY CONSTRUCTION, 2020 EDITION AND THE PROJECT SPECIAL PROVISIONS.

**STATE OF ALASKA**  
DEPARTMENT OF TRANSPORTATION & PUBLIC FACILITIES  
6860 GLACIER HIGHWAY, JUNEAU, AK 99801  
(907) 465-1763

APPROVED:

\_\_\_\_\_  
KIRK MILLER, P.E.  
REGIONAL PRECONSTRUCTION ENGINEER

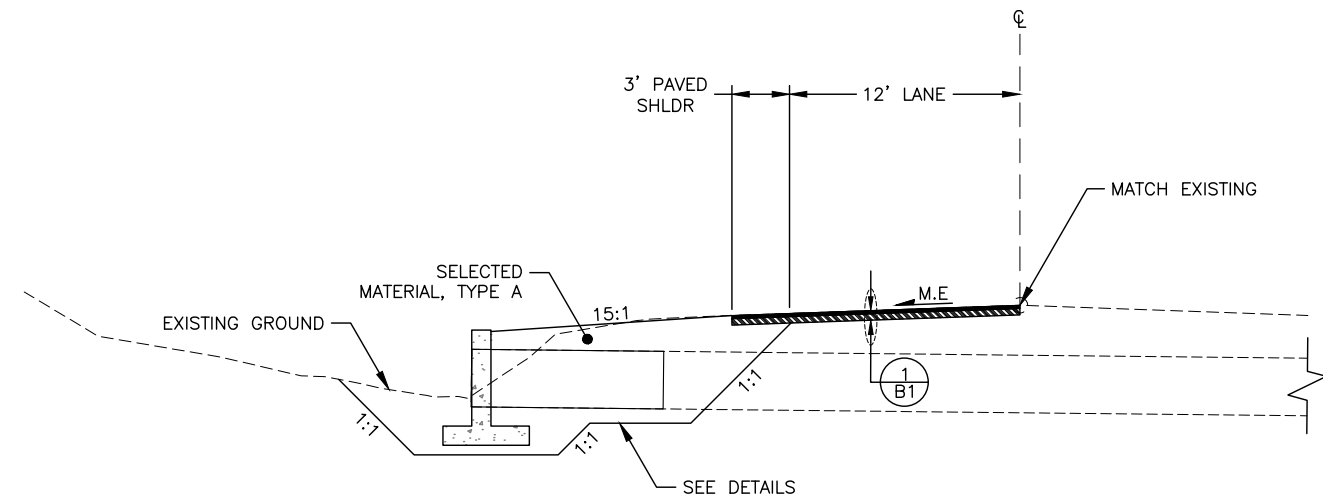
DATE

CONCUR:

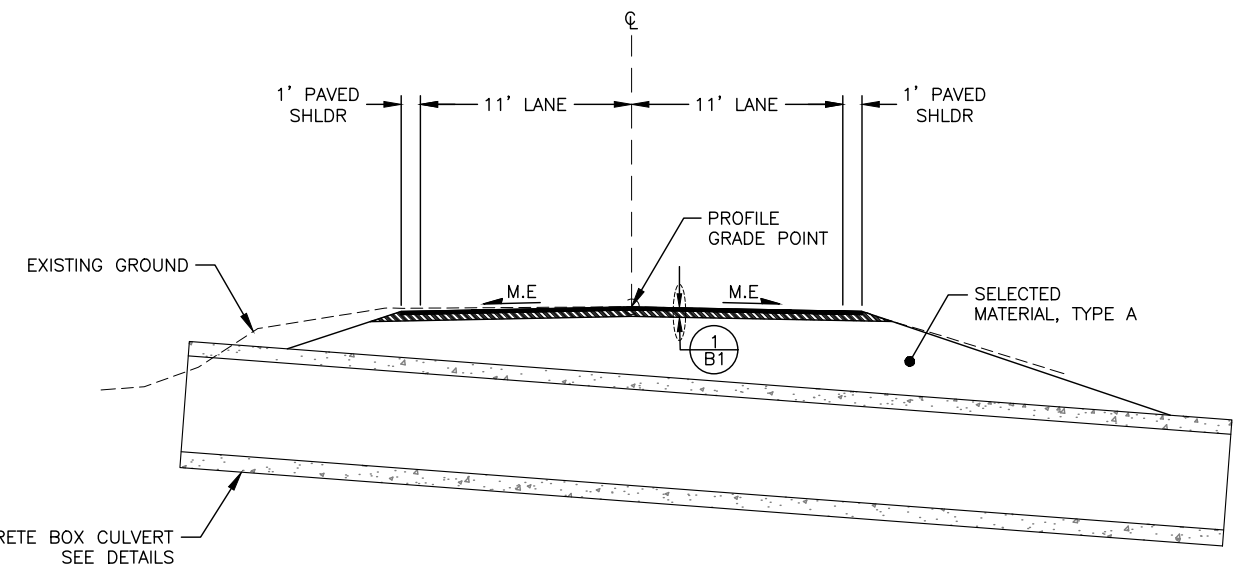
\_\_\_\_\_  
CHRISTOPHER GOINS, P.E., C.M.  
DIRECTOR, SOUTHCOAST REGION

DATE

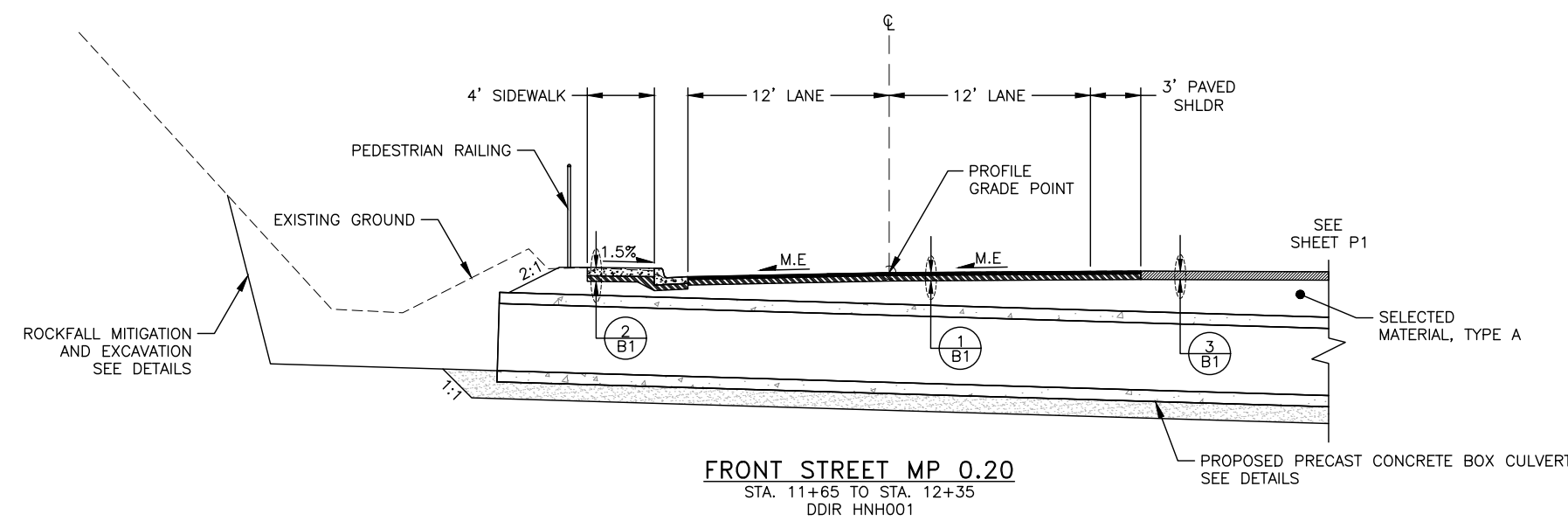
NO.	DATE	REVISION	STATE	PROJECT DESIGNATION	YEAR	SHEET NO.	TOTAL SHEETS
			ALASKA	0093008/SFHWHY00447	2025	B1	31



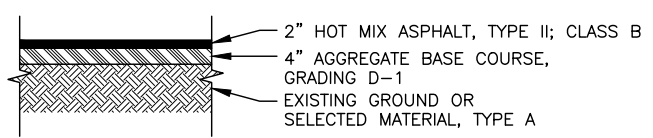
**MITKOF HIGHWAY MP 2.57**  
STA. 20+45 TO STA. 20+95  
DDIR PSG003



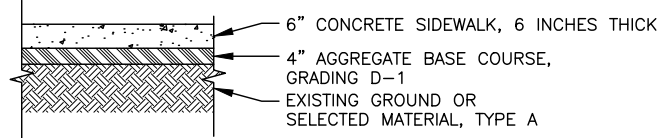
**MITKOF HIGHWAY MP 15.46**  
STA. 40+65 TO STA. 41+65  
CULVERT SLOPE AND PROPOSED FORESLOPES ARE EXAGGERATED DUE TO SKEW  
RELATIVE TO HIGHWAY CENTERLINE  
DDIR PSG002



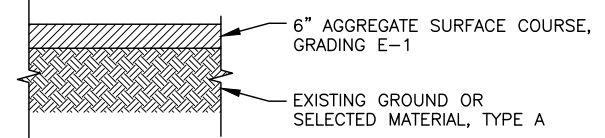
**FRONT STREET MP 0.20**  
STA. 11+65 TO STA. 12+35  
DDIR HNH001



**1**  
B1  
STRUCTURAL SECTION NO. 1  
NTS



**2**  
B1  
STRUCTURAL SECTION NO. 2  
NTS



**3**  
B1  
STRUCTURAL SECTION NO. 3  
NTS

PLANS DEVELOPED BY:  
HDR ENGINEERING, INC.  
582 E 36TH AVE STE 500  
ANCHORAGE, AK 99503-4169  
(907) 644-2000  
CERT. OF AUTH. AECC569



STATE OF ALASKA DEPARTMENT OF TRANSPORTATION  
AND PUBLIC FACILITIES  
HNH PSG SGY ROADWAY AND CULVERTS  
- DEC 20 SE PR  
**TYPICAL SECTIONS**

FILE C:\Users\lspat\OneDrive\Work\Projects\NTP\_15\Storm\_Recovery\NTP\_15\Project\_Files\HDR\CAD\Production\00447\_B1\_TYPICAL\_SECTIONS.dwg

DRAFTED  
CHECKED  
DESIGNED